

Teacher Business Owner  
Auto Body Technician Stylist Electrician  
Architect Mental Health Practitioner  
Adult Nurse Beautician Accountant  
**Accrington & Rossendale College** Film Producer  
Entrepreneur Educational Psychologist Games Designer  
Sports Coach Solicitor Plumber  
Physiotherapist Cyber Security Analyst



**College Guide 2025-26**

**The only Outstanding FE College in Lancashire**



# Contents

Welcome	4
Meet our Extraordinary Students	6
Travelling to College	8
Let's be Extraordinary Together	10
The ARC Campus	12
Industry Innovation Hubs	14
BFC in The Community	20
Girls Football (BFC)	22
Boys Football (BFC)	24
Extra and Super-Curricular	26
Student Support	28
Additional Learning Support	30
What Happens Next?	32
Which Qualification is Right for You?	34
Why Study Technical Education at ARC?	36
Why Study T Levels at ARC?	38
Why Study Apprenticeships at ARC?	39
Meet our Schools Team	87
Take Your Place at ARC	88
Parent, Carer and Guardian Information	90

## Courses

Business	40
Construction	44
Creative Media	48
Digital (IT)	52
Education & Early Years	56
Hair & Beauty	60
Health & Social Care	64
Law, Justice & Protective Services	68
Motor Vehicle	72
Sport	76
Entry	80
Apprenticeships	82
Courses at NCC	84



# Welcome

I'm thrilled that you're considering Accrington and Rossendale College for the next steps in your education. As you explore your options after school, rest assured that we're here to help you exceed your potential and become extraordinary.

We're proud to be ranked as the Number 2 College in the Country for learner achievement. This means our students not only succeed academically but also gain invaluable work experience and placement opportunities in courses designed with employers. These experiences provide you with enhanced, work-ready skills, enabling you to enter your chosen sector and make impactful contributions.

Our commitment to high-quality technical education is unmatched. Our curriculum is supported by our Industry Innovation Hubs, Industry Development Hubs, and Routes to Employment programmes. These initiatives are crafted in partnership with employers and taught by industry experts. We take pride in our strong employer partnerships, where they help shape our study programs and offer you first hand industry experience through work placements. This hands-on approach helps you to develop the professional standards and values essential for a successful and rewarding career. Working closely with employers ensures that you develop the skills they need from you, shaping the future of your industry.

While achieving your educational goals is crucial, we also want you to enjoy your time at college, grow personally, make new friends, and create lifelong memories. That's why we offer a diverse and exciting range of extra and super-curricular programmes to ensure you have a fulfilling experience.



**Lisa O'Loughlin**  
Principal and CEO of  
Nelson and Colne College Group

**We can't wait for you to join us in September. We believe that with hard work and our support, you can become extraordinary.**





This year our students once again achieved some **truly outstanding** results, and we are **so proud!**



**95%**  
Level 3  
Technical  
Education  
Pass Rate

**92%**  
T Level  
pass rate

**82%**  
of Level 3  
Technical  
Education  
learners achieved  
High Grades



**Our Education  
and Early Years  
T Level learners  
achieved**

**71%** of  
T Level learners  
achieved High  
Grades

**100%**  
High Grades



**Jack Whittaker**

**Former School:** Darwen Aldridge Community Academy  
**Achieved:** D\*D\*D in Level 3 Digital  
**Intending to progress to:** Employment in Italy, at the company where he undertook work experience whilst on a residential visit with College



**Izzy Whittle**

**Former School:** St Christopher's CE High School  
**Achieved:** A in Year 1 of T Level Education and Early Years  
**Intending to progress to:** A career as a Teaching Assistant after completing her second year



**Oliver Massey**

**Former School:** Burnley High School  
**Achieved:** D\*DD in Level 3 Sports Coaching  
**Intending to progress to:** Edgehill University to study Sports Coaching



**Saba Hussain**

**Former School:** The Hollins  
**Achieved:** A in Year 1 of T Level Education and Early Years  
**Intending to progress to:** University to study Primary Teaching after completing her second year

# Travelling to and from College has never been easier

Accrington and Rossendale College is well served by public transport and you will find that there are a wide range of travel options available to get to college.

## Travelling by bus?

### Free bus travel



You may be eligible for **FREE** bus travel if your annual household income is under £37,500\*

\* Eligibility criteria applies

### Bus passes



We have agreed a reduced rate with Transdev for our students that enables you to get a bus pass, and allows unlimited travel throughout your local area. The pass can also be used on weekends and in the holidays.

The Transdev termly Lancashire and Blackburn bus passes cover a wide geographical area including Burnley, Blackburn, Clitheroe and Colne. There are a number of additional bus services which operate in the Accrington area from the Pilkington Bus Company.

### Transdev Go App

Scan here to download the Transdev Go app to check timetables and plan your route.



\*Subject to eligibility



### Train

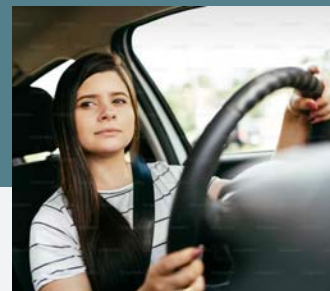
The College is only a 15-minute walk from Accrington Train Station.

If you are thinking of travelling by train, you can plan your journey to College via [www.thetrainline.com](http://www.thetrainline.com)



### Cycling

Not only is cycling great for your health it is the greenest way to travel! We have a cycle loan scheme and a safe space to securely store your bike. Speak to Student Services to find out more.



### Driving and parking

If you drive already or pass your test during your time at College, you can park for free in our secure car park. Disabled parking is available for blue badge holders too.



# Let's be extraordinary together



Without our amazing students like **you**, we couldn't be the **ONLY OUTSTANDING FE COLLEGE IN LANCASHIRE**

Because of the hard work of our students and the support of our highly skilled College team, together we are...

The **No2** College in the Country

and we have a **92%** T Level Pass Rate

and a **95%** Level 3 Technical Education Pass Rate

When we welcome you to Accrington and Rossendale College, you know your journey to **extraordinary** is well on track. As well as being an Ofsted Outstanding College since 2005, we are closely linked to industry and committed to getting you skills ready with the tools that you need to take you one step further to the career, university or apprenticeship you really want.

## We promise you...

✓ Tutors who work in industry as well as the classroom

✓ Over 150 employers to help you develop the right industry skills

✓ The opportunity to be involved in regional and national industry skills competitions

✓ A curriculum that is shaped and developed with industry professionals

We can't wait to see you at Accrington and Rossendale College and for you to be part of something **extraordinary**

# Campus Facilities & Developments

## £28m

With over £28m invested, or planned to be invested, in our campuses up to 2026, you can be certain that the facilities at ARC are industry leading.



In the heart of Hyndburn, our Accrington Campus thrives amid lush greenery, an idyllic education backdrop. With an on-site free gym, upgraded refectory, café, and study spots, it's perfect for both learning and leisure, and our technical spaces have been designed alongside employers to ensure that they are as industry connected as possible.



## Industry dedicated spaces

Our Construction and Green Technologies Centre, and Digital Industry Innovation Hub have dedicated spaces, designed with employers, to bring industry to life on campus.

Our Construction and Green Technology facilities, have recently undergone a £3million redevelopment and opened for learning in 2024. Designed in collaboration with employers the centre houses a brand-new employer hub, a future-focused virtual reality space and new and upgraded Painting & Decorating workshops. These developments replicate high value construction facilities across the industry and ensure that you are able to put your knowledge and skills to the test in real-world environments, before moving into a high value career within the sector.



Our Digital Industry Innovation Hub is undergoing redevelopment for September 2025. Employers are heavily involved in the design process and the facilities will reflect high value professional and technical workspaces aligned to industry. These learning and teaching spaces will enable you to develop your knowledge and skills in environments that reflect your future workplace.



All of ARC's advanced facilities mirror industry standards, preparing you for high value professional and technical careers. With top-notch tools, you will excel unhindered. Whether in the 360 Virtual Reality Hub, Hair & Beauty Salons or Sports Centre and Fitness Suite, learning at ARC means you are provided with the very best.



# Introducing >>

**iih.**  
Industry Innovation Hub.

**idh.**  
Industry Development Hub.

## Welcome to a new way of learning

Introducing our **Industry Innovation and Industry Development Hubs.**

Our industry hubs will offer you a unique way of learning and working with access to more opportunities than ever before.

## What can you study?

### **iih.** What is an Industry Innovation Hub?

An Industry Innovation Hub offers Level 2 and 3 courses which are all co-developed and co-delivered by employers. On top of this every student enrolled on an Industry Innovation Hub course is guaranteed work experience of up to 35 hours, giving you essential skills to take into your future career.



In **September 2024** we will launching our new Industry Innovation Hub in:



**Digital**

**Sept 24**

In **September 2025** we will be launching another 3 Industry Innovation Hubs to strengthen this unique offer:

**Sept 25**



**Health & Social Care**



**Logistics & Warehousing**



**Business & Professional Services**





# Introducing our Industry Development Hub

In our Industry Development Hubs, we work with over 150 employers to match courses to industry need and co-develop the programmes to ensure you develop the skills you need to progress in your future career. You will study a Level 2 or 3 qualification and will be guaranteed up to 35 hours work experience.

## What can you study?

From **September 2024** our industry Development Hubs will include:



- Construction
- Creative Media
- Education & Early Years
- Hair & Beauty
- Health & Social Care
- Law, Justice & Protective Services
- Motor Vehicle
- Sport



## So what does this mean for you?

Will choosing to study at one of our **Industry Innovation** or **Industry Development Hubs** get you one step closer to your chosen career....



Not only will you get the qualifications you need, but by being part of one of our Industry Innovation or Industry Development Hubs, we will be giving you the connections to industry, the skills development and real-world, first-hand experience that will absolutely set you apart from everybody else.

### This is what you will be benefiting from:

- A guaranteed minimum of 35 hours industry experience
- The potential to study abroad
- Specialist industry tutors
- Guest lectures
- Industry days, trips and visits
- Financial support including getting to and from work placements
- Virtual reality work experience, including job interviews
- Involvement in regional and national skills competitions

# We will connect you to your chosen industry.

We work with over 150 employers to ensure that our programmes are aligned to industry needs.

Understanding the current and future skills employers will need, makes sure we are giving you the best possible experience and the skills you will need to shape the future of your chosen industry.

## Big brands are helping shape our curriculum..

Here are just some of the employers we are working with:



# Don't take our word for it.....



Here is how Mareme benefited from a unique industry focused experience.

Mareme, the College's T Level Learner of the Year, recently completed the Digital T Level and worked at EG Group for her work experience. Her excellent programming skills were fully utilised whilst on placement in her role as Project Support for the company.

Mareme added real value whilst in the workplace and received the highest grades possible in her Year 1 exams. The industry links she has built during her studies have had a huge impact on her future prospects and she is now forging her own career within the field.

## Are you ready to Apply?

Get ready to experience an extraordinary new way of learning, with more opportunities than ever before. Simply apply for your chosen course and we will do the rest!

Find out more about our courses at [accross.ac.uk](https://accross.ac.uk)





# BFC in the community



Our partnership with Burnley Football Club in the Community is one of a kind, and gives you the opportunity to develop sporting excellence alongside one of the country's best loved clubs.

Supporting developments in Football, Netball and Cricket this unique partnership enables you to learn at the only Outstanding FE College in Lancashire, and get training and support from top flight coaches.



## Netball Academy

Our Netball Academy is for girls who are aged 16-18 and studying at Accrington and Rossendale College.

Coached by Burnley FC in the Community, the academy is a fun way to keep fit, take part in competitive sport, make new friends and build your teamwork skills! Students will compete in the AoC Sport Northwest Netball League.



## Cricket Academy

The Cricket Academy at ARC is a great way to make new friends, keep fit and continue to develop your cricket career.

Coached by fully qualified coaches from Burnley FC in the Community, and in partnership with Lancashire Cricket Foundation, you will be able to train up to 4 days a week, and really hone your skills



## Boys Football (BFC Shadow Youth Team)

The Burnley FC Shadow Youth Team (SYT) gives talented young male players aged 16-18 the chance to combine academic studies with practical football experience.



## Girls Football (Girls Post-16 Academy)

The Girl's Post-16 Academy is ideal if you love the idea of playing competitive football alongside your studies. The programme gives talented young players aged 16-18 the chance to combine academic studies with practical football experience, and provides emphasis on enhancing technical skills and ability, while supporting educational and career development.





# Girls Football (Girls Post-16 Academy)

## What does the programme include?



- You will train three to four times a week following a playing and development strategy under the guidance of our UEFA licenced coaches.
- You can choose from a selection of study programmes at ARC, including a full-time BTEC Extended Diploma in Sport Coaching and Development (equivalent to three A Levels).
- You will have the opportunity to complete your FA Level 1 in Football Coaching alongside your academic subjects which includes emergency first aid and safeguarding qualifications.
- You will represent Burnley FC in the National Football Youth League (NFYL), English Football League (EFL), Community and Education Football Alliance (CEFA) League and AoC Football League.
- There may also be additional fixtures with English Premier League and English Football League Community sides.
- Overseas, end of season training camps and tournaments provide excellent opportunities to train and play in different countries whilst experiencing different cultures.



## What are the benefits?



A pathway into scholarship opportunities in America

Opportunities to showcase talent through NFYL and English Schools/ English Counties representative squad trials



Links with, and opportunities to play for Burnley FC Women

Strength & conditioning and sports analysis programmes



Access to fully qualified Physiotherapists



Individual and squad photos at Turf Moor



Nutrition guidance



Play in Burnley FC official Home and Away kits



FREE Burnley FC Training kit

## What are the entry requirements?

To access the Girls Post-16 Academy you have to be studying on an ARC programme, preferably in Sport, although there may be other course options available. Each programme has their own entry requirements which can be found on the course pages within this College Guide.



# BFC

## Shadow Youth Team (SYT)

The Burnley Football Club Shadow Youth Team (SYT) gives talented young male players aged 16-18 the chance to combine academic studies with practical football experience and is delivered by BFC in the Community staff in partnership with Accrington and Rossendale College.

### What does the programme include?

- You will train four times a week following a playing and development strategy under the guidance of UEFA licenced coaches.
- You will study on the full-time BTEC Extended Diploma in Sport Coaching and Development (equivalent to three A Levels).
- You will have the opportunity to complete your FA Level 1 in Football Coaching alongside your academic subjects which includes emergency aid and safeguarding qualifications.
- You will represent BFC in the National Football Youth League (NFYL), English Football League (EFL), Community and Education Football Alliance (CEFA) League and AoC Football League.
- There may also be additional fixtures with English Premier League and English Football League Community sides.
- Overseas end of season training camps/tournaments provide excellent opportunities to train and play in different countries whilst experiencing different cultures.

### What are the benefits?



A pathway into scholarship opportunities in America

Opportunities to showcase talent through NFYL and English Schools/English Counties representative squad trials

Strength & conditioning and sports analysis programmes



Access to fully qualified Physiotherapists



Nutrition guidance



Play in Burnley FC official Home and Away kits



FREE Burnley FC Training kit



Individual and squad photos at Turf Moor

**Train** >>> **Play** >>> **Excel**

### What are the entry requirements?

To access the Shadow Youth Team (SYT) you have to be studying on an ARC programme, preferably in Sport, although there may be other course options available. Each programme has their own entry requirements which can be found on the course pages within this College Guide.

# Extra-curricular & Super-curricular

Discover new hobbies, bring your learning to life, make new friends and most of all support your health and wellbeing at Accrington and Rossendale College.



## Our extra-curricular activities will help you:

### Give back



Stretch and challenge yourself to make a difference, to both yourself and others. Get involved with **Duke of Edinburgh's Award** or **volunteering opportunities**.

### Keep learning



Develop important career and life skills and enhance your learning with **Cooking on a Budget, Driving Theory** or **Financial Wellbeing**.

### Relax and reset



Be aware of your wellbeing and reflect on the world around you with **Animal Therapy, Sustainability Group** or **Yoga**.

### Be active



Keep both your body and mind fit and healthy with **Archery, Basketball, Netball, Football, Rounders, Cricket** or **Self Defence**.

### Connect and be creative



Ignite passion, make new friends and connections. Get involved with our **Book Club, Creative Writing** or **Games Club**.

## Super-curricular opportunities

Alongside extra-curricular activities, the super-curricular opportunities here at ARC have been created to add real value to your learning experiences and your academic and technical study.

Throughout your programme, you will have access to a vast array of experiences linked to your chosen subjects and future career. These opportunities, that bring your learning to life outside the classroom, not only give you the subject knowledge you need but also enrich your personal and academic development.

## This year our T Level students visited **Cyprus and Italy**, taking part in

### 3 weeks of work experience!

Our students enjoyed working with a range of employers in Finance, Business Administration, Sales, Web Development and Social Media Marketing. Throughout their stay, they developed valuable professional skills and engaged with the local culture, providing them with invaluable experience which will no doubt set them apart in an ever-increasing global environment.

## Our super-curricular offer includes:

- Technical Education industry days
- Skills competitions to enhance your skill set
- Work experience opportunities
- Engaging guest speakers
- University discovery days
- Masterclasses
- Exciting international trips and work experience opportunities abroad



At ARC we know that to succeed within your chosen career you need experience, not just qualifications. Therefore we work hard to ensure you can access a range of activities, industry connections and trips in order to support you to becoming confident and independent young people who can go on to become our future leaders.



# Student Support

At ARC, we are dedicated to helping you reach your goals and carve your path to success. With our exceptional support system, we strive to remove any barriers and empower you to reach your fullest potential.



## Careers

Our dedicated Careers Team offers year-round support to help you achieve your post-College career aspirations and goals. We provide expert guidance and assistance to ensure you understand what you need to do to reach the pinnacle of your chosen field.

## Learning Resource Centre (LRC)

Your gateway to finding the information you need to achieve your academic goals. You will find books, journals, PCs and a comfortable silent study zone in the LRC, designed to help you study without distraction. Our friendly staff are always ready to assist with your enquiries and can guide you through our vast collection of e-resources available both in College and from home.

## Personal Tutors

Get support throughout your College journey to build positive characteristics and become a respectful, responsible, and active citizen.

## UCAS

Receive extra help and support with your university application through UCAS application, including one-to-one sessions and personal statement advice.

## Learning Mentors

Our mentors can guide you through your academic studies, offering essential skills and support for your success.

## College Nurse

Our Nurse offers a drop-in service for health and wellbeing concerns, including mental and physical health, sexual health and relationships.

## Student Services

Our Student Services team are here to help you with your time at College. They can provide help with enquiries, including providing information on financial assistance available to help with the costs associated with your course.

All students at ARC can get a free breakfast, free fruit, subsidised travel, free gym access and free wi-fi access.

All students can apply for the College Bursary, which is subject to meeting eligibility criteria. Some students may also be eligible for the Vulnerable Bursary Fund.

### You can receive:

- Free Fruit
- Free Breakfast
- Free College Meals\*
- Free Gym
- Free High Speed wi-fi
- Free Books\*
- Help with the Cost of Uniforms\*
- IT Equipment Loans\*
- Support with the Cost of Trips\*
- Free Kit/Equipment for your Course\*



## Health & Wellbeing

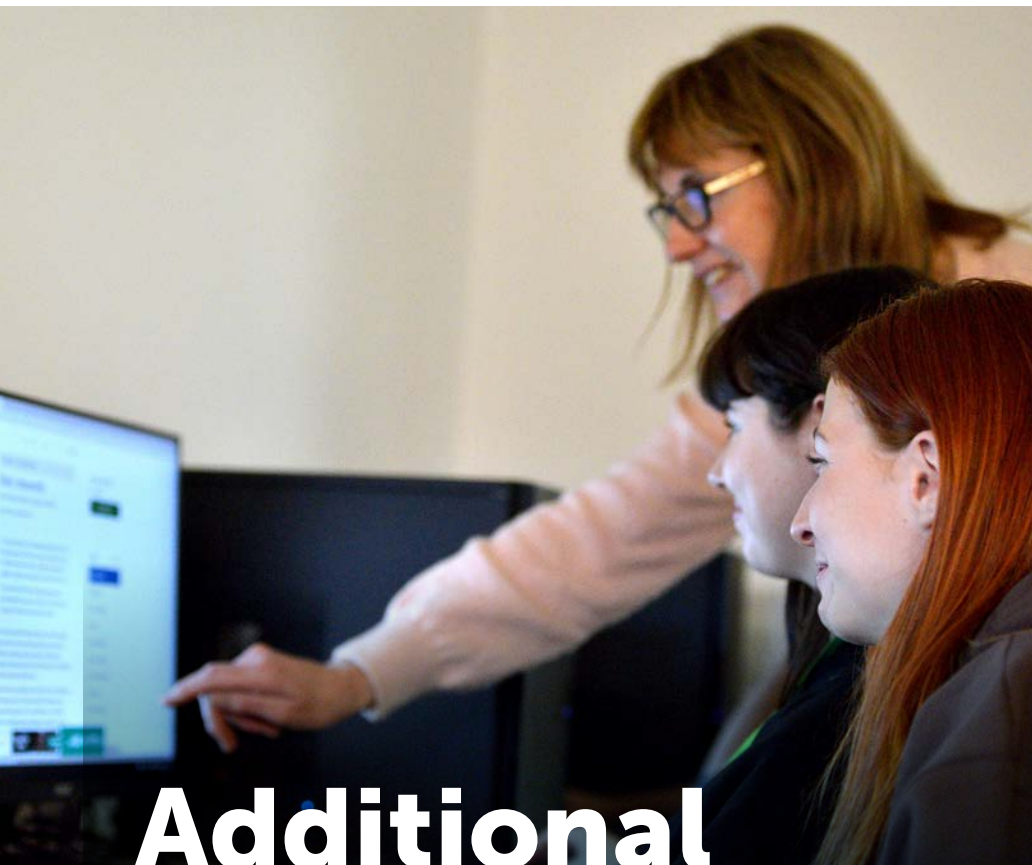
Explore year-round Health & Wellbeing opportunities within and around the College. Our expert Officers actively promote the 'Five Ways to Wellbeing' to enhance your overall experience at College through a range of activities, all designed to keep you feeling great for your studies.

## Counselling

Access to free, confidential and non-judgemental counselling to explore and address your experiences or any worries you may have.

## Safeguarding and Welfare

Our highly trained professionals prioritise your safety both on and off campus, providing unwavering support. The year-round Safeguarding Team offers guidance, builds resilience, and assists in overcoming personal issues.



# Additional Learning support

No matter what your needs or requirements are, we are committed to ensuring your time at College is as supportive and empowering as possible.

Our dedicated Additional Learning Support Team (ALS) will work closely with you to ensure you have everything you need to be able to achieve your full potential.

## We offer:

### Learning support

If you require any learning support, or you simply need help to manage your study workload, we've got you. All our support is confidential and any information you provide will always be kept between you and the appropriate professionals.

### ALS quiet zone and study space

The ALS Study Zone is a multi-functional resource that you can access while at College. It can provide you with a quiet place to study within a more focused environment.

### Education, Health and Care Plan

If you have an Education, Health and Care Plan (EHCP) we can work with you, your current school, and the Local Authority to ensure that you get the best possible support when you come to College.

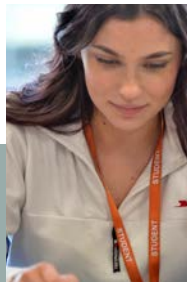
### Physical disability support

Whether you have a physical, hearing or visual disability, we are equipped to support you with all the access and learning resources you need to succeed at College.



# What happens next?

Choosing where you want to go to college and what you want to study can be a difficult decision. Choosing Accrington and Rossendale College means we will be with you every step of the way.



## Step 1 - Do your research

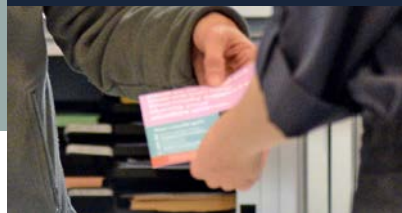
Have a think about your favourite subjects, which do you enjoy the most? What is your dream career and what subjects or courses will help you get there? Talk to friends, family, teachers, your careers adviser and our Academic and Technical Education Mentors.

## Step 2 - Visit us

Open Events are a great chance to visit the campus and find out more about our wide range of courses. You can chat to course tutors, explore our facilities and find out what we have to offer. We run Open Events throughout the year, and our dates are listed on the back page of this guide. If you would prefer a 1:1 visit, please get in touch with our Academic and Technical Education Mentors at [schools@nelsongroup.ac.uk](mailto:schools@nelsongroup.ac.uk) and we will arrange this for you.

## Step 3 - Submit your application

Once you have decided which course you would like to apply for, you can submit your application. See page 88 for details on how to apply.



## Step 4 - Attend your interview and accept your offer

Once you have completed your application, our Admissions Team will be in touch with details of your interview. This is a friendly, informal chat with a course tutor which gives you the opportunity to find out more about the course you have chosen. Interviews usually take place once a month, between 4-6pm. After your interview you will receive a conditional offer for your chosen course. To accept this offer, you can log into your online account or you can contact our Admissions Team and they will update your record.

## Step 5 - Join us at New Student Day

Our New Student Day takes place on **Thursday 26th June**. This event gives you the opportunity to sample your chosen course and meet your tutors and fellow classmates. You will also be able to explore the campus and experience College life.

## Step 6 - Prepare for joining College

Look out for your Guide to Starting College which will land in the post with you over summer. This details everything you need to know about enrolment which is when you officially join College.



## Step 7 - GCSE results and enrolment

Collect your GCSE results and bring them to your enrolment appointment. Here you will meet with tutors to confirm your course choice. Don't worry if you have not got the grades you were expecting, we will have an alternative course for you.

## Step 8 - Congratulations!

Once you have collected your ID badge at your enrolment appointment you are officially a student at an Ofsted Outstanding College! We look forward to seeing you on your first day in September.



# Which qualification is right for you?



No matter where you're headed in your career, ARC offers the very best pathways to get you there. Having a clear understanding of the key distinctions between T Levels, Technical Education, and Apprenticeship programmes will assist you in choosing the perfect route that aligns with your future aspirations.

## Level 3

Duration: 1-2 years

You will need to have achieved 5 GCSE passes at a minimum of Grade 4, which must include a Grade 3 and 4 in English Language or Literature and Maths, in either combination.

## Level 2

Duration: 1-2 years

A Level 2 qualification is equivalent to GCSE Grades 4-9 and you will be expected to have achieved 5 GCSE passes at a minimum of Grade 4, which must include a Grade 3 and 4 in English Language or Literature and Maths, in either combination. Successful completion of this course will pave the way for you to further your studies at Level 3.

## Level 1

Duration: 1 year

You will need to have gained at least 2 GCSEs at Grade 3 or above which must include a Grade 2 and 3 in English Language or Literature and Maths, in either combination. Our Level 1 programmes will build on your existing skills and upon successful completion, allow you to progress to a Level 2 course.

We know you will be working hard to achieve your very best at GCSE, but if for any reason you don't get a GCSE Grade 4 or above in Maths or English you can retake those

here at College. Here at ARC you are more than twice as likely to get a Grade 4 or above in English or Maths than you would at the average FE college.



## Our courses explained

### Prefer to work practically? Consider a... Technical Education Course.

- Enjoy practical study and learn industry-ready skills with this hands-on approach to learning
- Expert tutors with industry experience to support you in your career
- Gain a qualification that can lead you directly into employment, an apprenticeship or university

### Ready for work? Consider an... Apprenticeship.

- Earn while you learn
- Gain skills employers want
- Receive support from dedicated Trainers and Assessors

### All of the above? Consider a... T Level Course.

- A work-based education combining classroom study and industry experience
- Get essential work experience within relevant industries and study in the classroom to gain industry focused skills and knowledge
- Open doors to university level education

# Why study Technical Education courses at ARC?

Here at ARC, our Technical Education Courses are designed with employers in mind, giving you the most up-to-date relevant skills and knowledge to thrive in your career.

Our guest speakers, dedicated industry days, and work placements provide students with experiences like no other and allow you to meet with leading organisations within your chosen sector. Not only will you learn the required knowledge for your industry you will also gain insights from professionals, to help realise your full potential.

As our Technical Education courses are interlinked to the workplace, you will be in a strong position to either go straight into employment, secure an Apprenticeship, or gain a place at a prestigious university after you complete your course.

We have a **95% Level 3** Technical Education **Pass Rate**



# Which Technical Education course is right for you?

## Level 3 Duration: 1-2 years

- Equivalent to 3 A Levels.
- Designed to get you ready for your next steps after College, be it university, an Apprenticeship or employment.
- The qualifications will be tailored around you and your career aspirations.
- 5 GCSE passes at a minimum of Grade 4, which must include a Grade 3 and 4 in English Language or Literature and Maths, in either combination.

## Level 2 Duration: 1 year

- Designed to get Level 2 students ready for a Level 3 course and a career in your chosen sector.
- 4 GCSE passes at a minimum of Grade 3, or a Level 1 BTEC which must include a Grade 3 in English Language or Literature and Maths.

## Level 1 Duration: 1 year

- You will gain an insight into Technical Education and further develop your skills in English and Maths.
- On successful completion of your Level 1 course, you may be able to progress on to further studies with a Level 2 course in your chosen subject or onto an Apprenticeship, where appropriate.
- Opportunity to retake your Maths and English GCSEs.
- 2 GCSE passes at a minimum of Grade 3, which must include a Grade 2 and 3 in English Language or Literature and Maths, in either combination.

# Why study T Level courses at ARC?

T Levels are a ground-breaking two-year Level 3 qualification that will offer you a mixture of classroom-based learning and 'on-the-job' experience. They are designed in collaboration with employers, are the equivalent to three A Levels, and include an exciting 45-day (minimum) industry placement in your chosen sector.

We have a **92% T Level Pass Rate**

T Levels are designed to give you the knowledge, skills and experience companies are looking for, helping you to step straight into your chosen career, higher level Apprenticeships or onto a degree.

Here at ARC, we were one of the first institutions in the country to deliver T Levels and as such, we have seen numerous student successes and our teams have amassed a wealth of experience developing and delivering these qualifications. There truly isn't a better place for you to embrace this new and exciting approach to education.



**Level 3** Duration: 2 years

- 5 GCSE passes at a minimum of Grade 4, which must include English Language or Literature and Maths at Grade 4.

# Why study Apprenticeships at ARC?

An Apprenticeship is a full-time job, where you will work for a business while gaining a nationally recognised qualification. It is on-the-job training, and you even get paid!

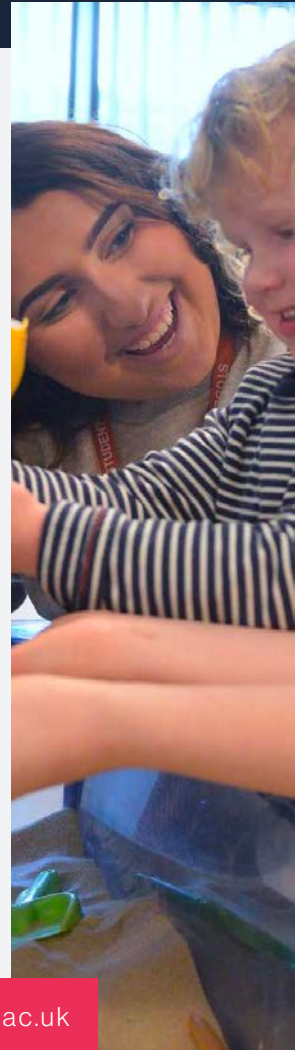
With an Apprenticeship, you will develop the skills and experience that employers want, building up an impressive CV. Apprenticeships take between one to four years to complete, depending on the type and level. What's great is you can learn at a pace suited to you and you will be supported at each stage by an industry specialist Trainer Assessor.

Accrington and Rossendale College have been providing high quality Apprenticeships for many years. We have an excellent reputation with businesses across East Lancashire and beyond, who look to us to find their next leading employee. This could be you if you decide that an Apprenticeship is the right next step for you! We have a strong track record of Apprentices securing full-time employment after their Apprenticeship.

We have a specialist Apprenticeship Recruitment Team to help you find employment and support you through your application journey. We work with our wide range of top-quality employers, providing a talent matching service to ensure you are supported in finding the right role.

If you want to find out more about our Apprenticeship offer why not get in touch with our dedicated team using the details below:

☎ 01282 440 319 ✉ [apprenticeships@nelsongroup.ac.uk](mailto:apprenticeships@nelsongroup.ac.uk)







# Business

Are you driven to thrive in a dynamic corporate setting, or do you envision carving your path as a successful entrepreneur?

Whether your dream is to excel in a large corporation or embark on your own venture, this course empowers you with a deeper understanding of business intricacies. Linking in with employers such as Pendleside Hospice, Morrisons, Matthew Kibble Transport, and Tax Assist, as a business student at Accrington and Rossendale College, you will experience high level training from industry experts, ensuring the highest quality of technical education.

You'll have access to an array of exciting opportunities that bring your learning experience to life within industry, giving you the knowledge and skills to really excel. Tailoring your study programme is made possible through engaging work experience placements, inspiring

trips, industry specialist guest speakers, and much more.

Embrace the chance to shape your future and maximise your potential in the dynamic world of business.



There is no limit to where Business can take you. By studying at Accrington and Rossendale College, you could go on to:

## University

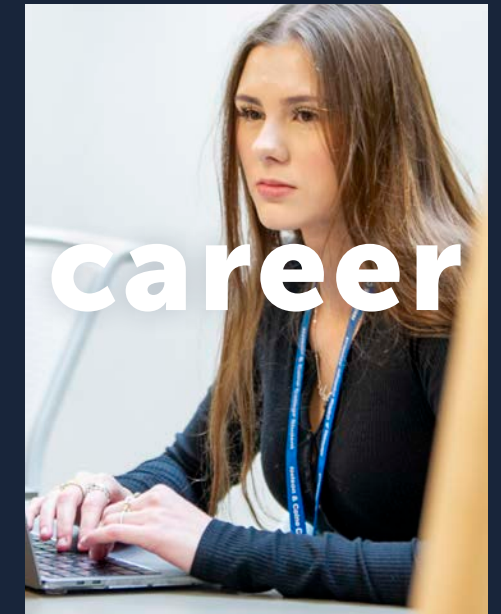
Studying Business opens a variety of doors for your future. With a Business qualification you could go on to study a wide range of undergraduate programmes at university, including **Marketing, Accounting and Finance, Business Management, Economics, Advertising and many more** courses at a multitude of universities across the country.

## Apprenticeship

An Apprenticeship is a great option after College if you would like to go straight into the world of work. There are a range of Apprenticeship Standards available to undertake across a vast number of employers within the sector and an Apprenticeship within the Business sector would allow you to experience a range of different career options and help you figure out what you are most interested in.

# Start your career

There are a variety of different career paths you can go into when you study Business. You can venture into many different industries, including **Management, Marketing and Advertising, Finance, Accounting and Human Resources**, including running your own business.





Entrepreneur

Accountant

Financial Advisor

Economist

# You could become

Marketing

Executive

Project Manager



## and earn...

**£30K**

Average Marketing Executive salary

**£45K**

Average Senior Marketing Executive salary

**£60K**

Average Marketing Manager salary

(Prospects.ac.uk, 2024)



The Business Industry across the North West adds **£10.8billion** to the national economy, and employs approximately **270,000 people**. (Lightcast, 2024)



Level	Course	Duration
3	Business Management and Administration T Level	2 years
2	Level 2 Business	1 year
1	Routes to Employment	1 year
3	Business Administrator Level 3 Apprenticeship	21 months
2	Customer Service Practitioner Level 2 Apprenticeship	16 months

### Entry requirements:

T Level	Level 3	Level 2	Level 1
5 GCSE passes at a minimum of Grade 4, <b>which must include</b> English Language or Literature and Maths at Grade 4.	5 GCSE passes at a minimum of Grade 4, <b>which must include</b> a Grade 3 and 4 in English Language or Literature and Maths, in either combination.	4 GCSE passes at a minimum of Grade 3, or a Level 1 BTEC <b>which must include</b> a Grade 3 in English Language or Literature and Maths.	2 GCSE passes at a minimum of Grade 3, <b>which must include</b> a Grade 2 and 3 in English Language or Literature and Maths, in either combination.

## What can you study with us?

To find out more about this course scan this code:





# Construction

Watching your hard work come to life right before your eyes is an incredibly satisfying part of working in Construction.

Imagine seeing a building project transform and grow into its finished state, knowing that you played a crucial role in shaping the world around you.

At Accrington and Rossendale College, our Construction courses offer more than just high-quality training and industry-standard equipment; they provide a gateway to this exciting and fulfilling industry.

Linking in with employers within the sector these programmes offer high levels of employer collaboration, with curriculum activities designed and often delivered by employers themselves.



There is no limit to where Construction can take you. By studying at Accrington and Rossendale College, you could go on to:

## Specialisation

As a Construction student, you'll have the opportunity to tailor your study programme and immerse yourself in your chosen area of specialisation, whether it's **Construction and The Built Environment, Electrical Installation, Plumbing, Painting & Decorating, Plastering, Bricklaying, or Carpentry & Joinery**. Our dedicated team of industry experts will guide you every step of the way, ensuring you learn from the best in the field.

## Start your career

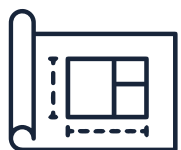
There are a variety of different career paths you can go into when you take a Construction Course. You can venture into many different sectors, including **Architecture, Bricklaying, Plumbing, Electrical Installation, Carpentry & Joinery, Painting & Decorating and Plastering**.

## Apprenticeship

An Apprenticeship is a great option after College if you would like to go straight into the world of work. There are a range of Apprenticeship Standards available to undertake across a vast number of employers within the sector and an Apprenticeship within the Construction sector would allow you to specialise in a trade craft whilst building on your skills.







Architect

Carpenter

Quantity Surveyor

Plumber

Bricklayer

Electrician

# You could become

# become

Painter & Decorator

Plasterer



## and earn...

£28K

£55K

Average

Average

Trainee Quantity Surveyor salary

Qualified Quantity Surveyor salary

# £85K

Average Associate Director salary

(Prospects.ac.uk, 2024)



Did you know that the construction sector is one of the largest in the UK economy – employing **3.1 million people** or **over 9% of the workforce**. (Gov.uk, 2024)

Level	Course	Duration
3	Design, Surveying and Planning for Construction T Level	2 years
2	Level 2 Construction and The Built Environment	1 year
1	Level 1 Construction and Civil Engineering	1 year
2	Level 2 Brickwork	1 year
1	Level 1 Brickwork	1 year
2	Level 2 Carpentry and Joinery	1 year
1	Level 1 Carpentry and Joinery	1 year
2	Level 2 Electrical Installation - <b>NEW FOR 2025</b>	1 year
2	Level 2 Plumbing and Domestic Heating - <b>NEW FOR 2025</b>	1 year
2	Level 2 Painting and Decorating	1 year
1	Level 1 Painting and Decorating	1 year
2	Level 2 Plastering	1 year
1	Level 1 Plastering	1 year
3	Craft Carpentry and Joinery Level 3 Apprenticeship	18 months
2	Carpentry and Joinery Level 2 Apprenticeship	27 months
2	Groundworker Level 2 Apprenticeship	21 months
2	Bricklayer Level 2 Apprenticeship	27 months
2	Painting and Decorating Level 2 Apprenticeship	27 months

### Entry requirements:

T Level	Level 3	Level 2	Level 1
5 GCSE passes at a minimum of Grade 4, <b>which must include</b> English Language or Literature and Maths at Grade 4.	5 GCSE passes at a minimum of Grade 4, <b>which must include</b> a Grade 3 and 4 in English Language or Literature and Maths, in either combination.	4 GCSE passes at a minimum of Grade 3, or a Level 1 BTEC <b>which must include</b> a Grade 3 in English Language or Literature and Maths.	2 GCSE passes at a minimum of Grade 3, <b>which must include</b> a Grade 2 and 3 in English Language or Literature and Maths, in either combination.

## What can you study with us?

To find out more about this course scan this code:



# Creative Media

Explore your style, unleash your creativity and realise your potential with Creative Media at Accrington and Rossendale College.

Discover the world of high-level artistic concepts and methods with our experienced tutors at Lancashire's only Ofsted Outstanding Further Education College. Gain invaluable real-world industry and in-class experiences that prepare you for diverse roles in the expansive creative media sector. Whether you aspire to be a Photographer, Graphic Designer, Art Therapist, Animator, Interior Designer, Game Designer, Web Editor, or more, our Creative Media courses, created with our employer partners, are your pathway to a great career in one of the most exciting industries around!



With our industry focussed courses, there is no limit to where Creative Media can take you. Studying at ARC, you could go on to:

## University

Studying a Creative Media course opens a variety of doors for your future. With a Creative Media qualification you could go on to study a wide range of undergraduate programmes at university, including **Graphic Design, Photography, Animation, Film Production, Media Studies and many more.**

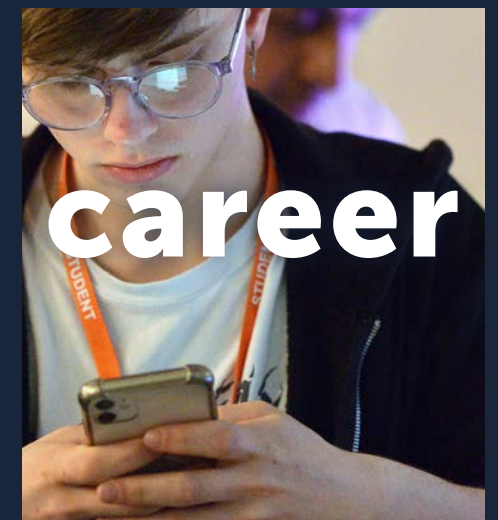
## Apprenticeship

An Apprenticeship is a great option after College if you would like to go straight into the world of work. There are a range of Apprenticeship Standards available to undertake across a vast number of employers within the sector. An Apprenticeship within Creative Media would enable you to join a company and get hands of experience within a variety of different areas including graphic design, video creation and website design.

# Start your

# career

There are a variety of different career paths you can go into when you study Creative Media. You can venture into many different industries including **Film, Design, TV, Photography and many more.**





Game Designer

Web Editor

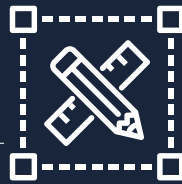
Graphic Designer

# You could become

Animator

Film & TV Producer

Photographer



## and earn...

£23K

Average Graphic Designer salary

£30K

Average Experienced Graphic Designer salary

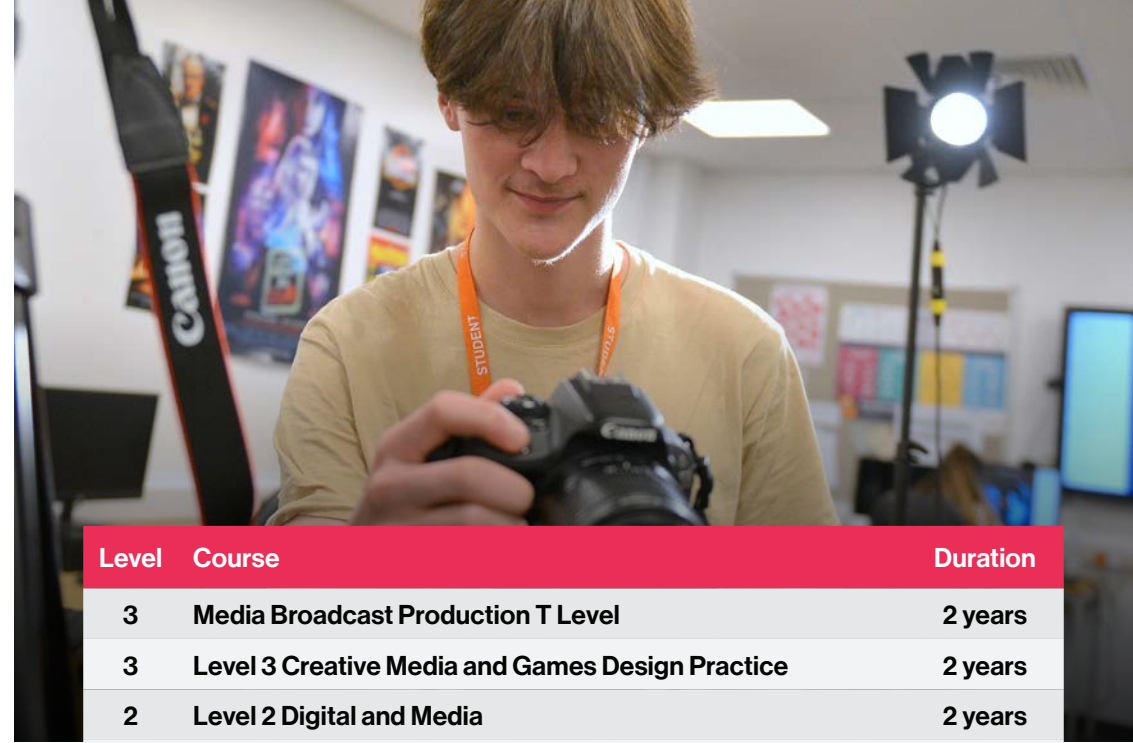
£42K

Average Senior Graphic Designer salary

(Prospects.ac.uk, 2024)

The UK's creative industries are vital to our economy - they employ **over 2 million people** and grow faster than other industries.

(Prospects.ac.uk, 2024)



Level	Course	Duration
3	Media Broadcast Production T Level	2 years
3	Level 3 Creative Media and Games Design Practice	2 years
2	Level 2 Digital and Media	2 years
1	Routes to Employment	1 year

### Entry requirements:

T Level	Level 3	Level 2	Level 1
5 GCSE passes at a minimum of Grade 4, <b>which must include</b> English Language or Literature and Maths at Grade 4.	5 GCSE passes at a minimum of Grade 4, <b>which must include</b> a Grade 3 and 4 in English Language or Literature and Maths, in either combination.	4 GCSE passes at a minimum of Grade 3, or a Level 1 BTEC <b>which must include</b> a Grade 3 in English Language or Literature and Maths.	2 GCSE passes at a minimum of Grade 3, <b>which must include</b> a Grade 2 and 3 in English Language or Literature and Maths, in either combination.

## What can you study with us?

To find out more about this course scan this code:







Digital (IT) is one of the most diverse industries to start your career in if you'd like to combine technical knowledge with your love for innovation. As more and more businesses discover ways to use technology to their benefit, demand for trained, specialist Digital and IT professionals grows, so now is your chance to step into this rewarding career.

With the digital sector being worth an estimated £91.9 billion, growing over 1000% between 2010 and 2020, and tech and IT roles accounting for 12% of all job vacancies in the UK, it is clear that the future is no longer digital... the present is! Our industry expert, experienced tutors will guide you on a journey into the digital sphere, unlocking skills in coding, web design, programming, cyber security, social media, database design and more. Our facilities and industry-standard equipment ensure no limitations will inhibit you from realising your tech-based potential, and employer involvement in all our programmes means that you will leave us with the right skills and experience to secure your future within this high value sector.

**Apply now and take your first steps towards a career in the world's largest industry!**



There is no limit to where Digital (IT) can take you. By studying at ARC, you could go on to:

### University

Studying Digital (IT) opens a variety of doors for your future. With a Digital (IT) qualification you could go on to study a wide range of undergraduate programmes at university, including **Computer Science, Digital Media, Cyber Security, Information Technology** and many more.

### Apprenticeship

An Apprenticeship is a great option after College if you would like to go straight into the world of work. There are a range of Apprenticeship Standards available which you can undertake across a vast number of employers within the sector, including Google, Samsung and Microsoft.

## Start your

## career

There are a variety of different career paths you can go into when you study Digital (IT). You can venture into many different sectors, including **Software Development, IT Consulting, Games Design, Robotics and Business Services.**





Game Designer

Robotics Engineer

Data Scientist

# You could become

Software Engineer

Website Developer

IT Consultant



## and earn...

**£30K**

Average Junior Data Scientist salary

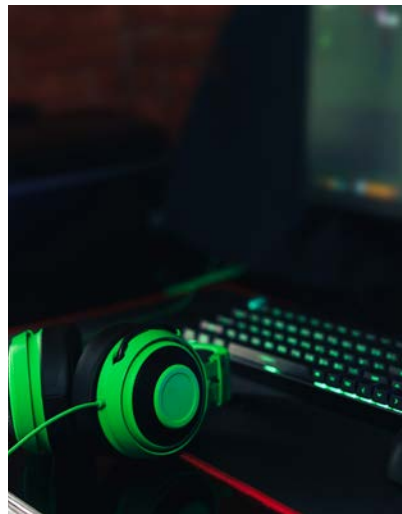
**£50K**

Average Data Scientist salary

**£70K**

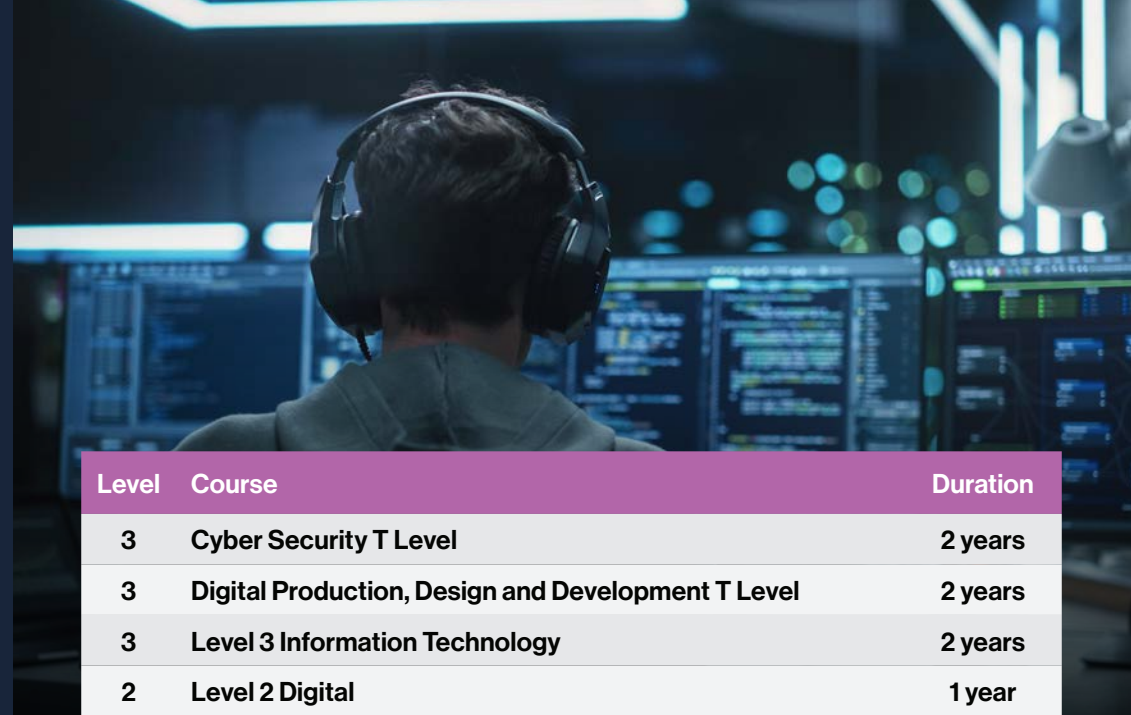
Average Lead Data Scientist salary

(Prospects.ac.uk, 2024)



The Department for Digital, Culture, Media and Sport estimate that there are **over 2 million open vacancies** across the sector.

(Prospects.ac.uk, 2024)



Level	Course	Duration
3	Cyber Security T Level	2 years
3	Digital Production, Design and Development T Level	2 years
3	Level 3 Information Technology	2 years
2	Level 2 Digital	1 year
1	Routes to Employment	1 year

### Entry requirements:

T Level	Level 3	Level 2	Level 1
5 GCSE passes at a minimum of Grade 4, <b>which must include</b> English Language or Literature and Maths at Grade 4.	5 GCSE passes at a minimum of Grade 4, <b>which must include</b> a Grade 3 and 4 in English Language or Literature and Maths, in either combination.	4 GCSE passes at a minimum of Grade 3, or a Level 1 BTEC <b>which must include</b> a Grade 3 in English Language or Literature and Maths.	2 GCSE passes at a minimum of Grade 3, <b>which must include</b> a Grade 2 and 3 in English Language or Literature and Maths, in either combination.

## What can you study with us?

To find out more about this course scan this code:







# Education & Early Years

A career in Education & Early Years is your chance to support young children as they learn, develop and prepare for their future.

It's a career path that is rewarding, full of variety and offers progression and different pathways to follow as you grow in experience and confidence. If you aspire to make a positive impact on the lives of young individuals, take your place on a course that can unlock doors to a wide range of different careers within the ever-expanding industry of Education & Early Years.

By pursuing a career in early childhood, you can have a significant influence on the lives of young children and their families. You'll be a driving force in creating a better world for the future generation.

As the only Ofsted Outstanding Further Education provider in Lancashire, we are dedicated to delivering high-quality education. Our strong connections with local schools, nurseries and employers offer exceptional opportunities for hands-on experience and skill development.



There is no limit to where Education & Early Years can take you. By studying at ARC, you could go on to:

## University

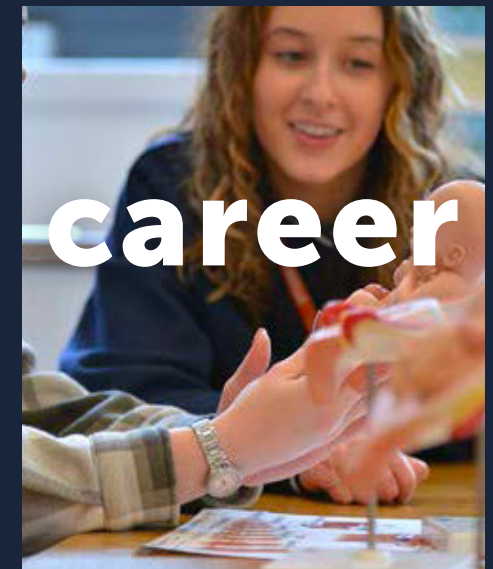
Studying Education & Early Years opens a variety of doors for your future. With an Education & Early Years qualification, you could go on to study a wide range of undergraduate programmes at university, including **Early Years & Childhood Studies, Primary Education with Qualified Teacher Status, Psychology**, and many more courses at a multitude of universities across the country.

## Apprenticeship

An Apprenticeship is a great option after College if you would like to go straight into the world of work. There are a range of Apprenticeship Standards available to undertake across a vast number of employers within the sector. You could be an Apprentice Teacher, Teaching Assistant or Early Years Educator, playing a vital role in enabling children to get the most out of education in a school or nursery setting, whilst getting real life experience in your chosen career.

# Start your career

There are a variety of different career paths you can go into when you study Education & Early Years. You can venture into many different industries, including **Primary and Secondary Education, Special Needs Education, Childcare and Psychology**.







Teaching Assistant

Special Educational  
Needs Coordinator

You could **become** Apprentice  
Teacher

Early Years Educator

Educational  
Psychologist

Primary School  
Teacher



and earn...

£28K

Average  
Primary Teacher  
starting salary

£39K

Average  
Primary  
Teacher salary

£80K

Average Primary  
Headteacher salary

(Prospects.ac.uk, 2024)



Nationally there are **over 280,000 jobs** in this sector in the North West alone, and this is expected to grow in the next decade.

(Prospects.ac.uk, 2024)



Level	Course	Duration
3	Education & Early Years T Level - Early Years Educator	2 years
3	Education & Early Years T Level - Assisting Teaching	2 years
3	Level 3 Education & Early Years	2 years
2	Level 2 Education & Early Years	1 year
1	Routes to Employment	1 year
3	Early Years Educator Level 3 Apprenticeship	21 months
3	Teaching Assistant Level 3 Apprenticeship	21 months
2	Early Years Practitioner Level 2 Apprenticeship	16 months

Entry requirements:

T Level	Level 3	Level 2	Level 1
5 GCSE passes at a minimum of Grade 4, <b>which must include</b> English Language or Literature and Maths at Grade 4.	5 GCSE passes at a minimum of Grade 4, <b>which must include</b> a Grade 3 and 4 in English Language or Literature and Maths, in either combination.	4 GCSE passes at a minimum of Grade 3, or a Level 1 BTEC <b>which must include</b> a Grade 3 in English Language or Literature and Maths.	2 GCSE passes at a minimum of Grade 3, <b>which must include</b> a Grade 2 and 3 in English Language or Literature and Maths, in either combination.

What can  
**you study**  
with us?

To find out  
more about  
this course  
scan this  
code:





Are you passionate about enhancing people's appearances or dream of owning your own salon? Do you crave a creative outlet where the human body becomes your canvas? Look no further than the Hair & Beauty programmes at Accrington and Rossendale College.

As Lancashire's only Ofsted Outstanding Further Education College, we provide the ideal foundation for a career in this thriving industry. Discover the secrets of stunning styles in our state-of-the-art salon, equipped with modern industry-standard equipment. Under the guidance of experienced tutors, and with strong employer partnerships, you'll enhance your skills in various techniques, while our tailored courses aim to bring out the very best in you. At Accrington and Rossendale College, you are only limited by your own creativity.

**Apply now and embark on a rewarding journey that leads straight to a job in the Hair & Beauty sector.**



There is no limit to where a Hair & Beauty course can take you. By studying at Accrington and Rossendale College, you could go on to:

### University

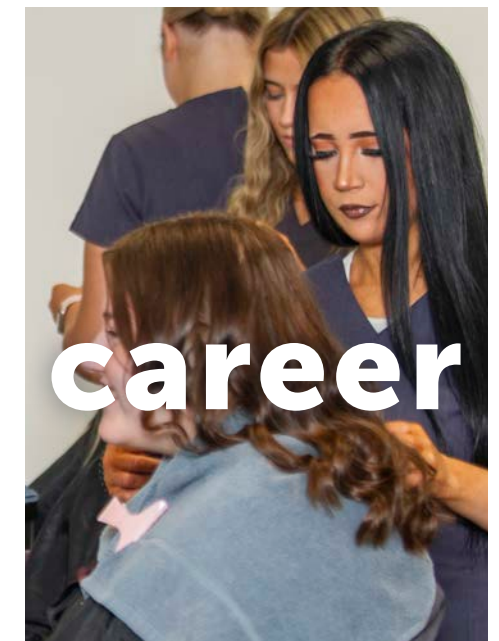
Studying Hair & Beauty opens a variety of doors for your future. With a Hair & Beauty qualification you could go on to study a wide range of undergraduate programmes at university, including **Hair & Makeup for Fashion, Hair, Makeup & Prosthetics for Performance, Pharmaceutical & Cosmetic Science, Advanced Beauty Therapy & Aesthetics, Salon Management and many more.**

### Apprenticeship

An Apprenticeship is a great option after College if you would like to go straight into the world of work. There are a range of Apprenticeship Standards available to undertake across a vast number of employers within the sector. An Apprenticeship within this sector, would enable you to expand your skills, as you will gain hands on experience of working in a salon, studio or on a set.

## Start your

There are a variety of different career paths you can go into when you study Hair & Beauty. You can venture into many different industries including, **Fashion, Photography, TV and Media.**





Cruise Liner  
Therapist

Specialist Hair  
Technician

Beauty Therapist

You could  
**become**

Hair  
Stylist

Salon Owner

Spa Therapist



and earn...

**£16K**

Average Beauty  
Therapist  
starting salary

**£25K**

Average  
Senior Beauty  
Therapist salary

**£45K**

Average Beauty Therapy  
Salon Owner salary

(nationalcareers.service.gov.uk, 2024)



Nationally the **North West has almost 30,000 jobs** in the Hair & Beauty sector, which is well above the national average. (Lightcast, 2024)

Level	Course	Duration
3	Level 3 Beauty Professional	1 year
2	Level 2 Beauty Professional	1 year
1	Level 1 Beauty	1 year
3	Level 3 Hair Professional	1 year
2	Level 2 Hair Skills	1 year
2	Level 2 Hair Professional	1 year
1	Level 1 Hair	1 year
2	Hair Professional Level 2 Apprenticeship	27 months

Entry requirements:

Level 3	Level 2	Level 1
5 GCSE passes at a minimum of Grade 4, <b>which must include</b> a Grade 3 and 4 in English Language or Literature and Maths, in either combination.	4 GCSE passes at a minimum of Grade 3, or a Level 1 BTEC <b>which must include</b> a Grade 4 in English Language or Literature and Maths.	2 GCSE passes at a minimum of Grade 3, <b>which must include</b> a Grade 3 in English Language or Literature and Maths, in either combination.

What can  
**you study**  
with us?

To find out  
more about  
this course  
scan this  
code:





# Health & Social Care

Are you enthusiastic about helping people in need and making a positive difference in your community? Do you aspire to take your selfless passion and make a career out of it?

Within this sector you'll be helping people every single day, whilst making a positive impact on their lives. Regardless of your role within the industry, working in Health & Social Care allows you to nurture your desire to help others and earn a living at the same time.

Whether aspiring to be a Midwife, Social Worker, Health Psychologist or one of the other multitude of jobs within one of the largest industries in the UK, the Health & Social Care programmes at Accrington and Rossendale College are the perfect gateway to a career within this ever-growing industry. Our unique partnerships with local employers, hospitals and GP surgeries offer exceptional opportunities for hands-on experience and skill

development, and our career pathway programmes open up direct routes into high value careers.

As the only Ofsted Outstanding Further Education provider in Lancashire, we are dedicated to delivering high-quality education. Apply today to embark on the initial step of a journey that paves the way for a gratifying and meaningful profession, where you have the power to shape, develop, and positively impact lives!



There is no limit to where Health & Social Care can take you. By studying at Accrington and Rossendale College, you could go on to:

## University

Studying Health & Social Care opens a variety of doors for your future. With a Health & Social Care qualification you could go on to study a wide range of undergraduate programmes at university, including; **Health & Social Care, Public Health & Wellbeing, Health Sciences, Nursing, Psychology and many more.**

## Apprenticeship

An Apprenticeship is a great option after College if you would like to go straight into the world of work. There are a range of Apprenticeship Standards available to undertake across a vast number of employers within the sector, including with the NHS. The NHS, the UK's largest Health & Social Care provider, offers a variety of different Apprenticeships such as Healthcare Science Assistant, Associate or Practitioner, or a Nursing Degree Apprenticeship.

# Start your career

There are a variety of different career paths you can go into when you study Health & Social Care. You can venture into many different industries, including **Healthcare, Social Work and Psychology.**





Healthcare Science  
Social Worker Assistant

Adult Nurse

you could  
become

Paramedic

Mental Health  
Practitioner Midwife



and earn...

£32K

Average  
Paramedic  
salary

£43K

Average Senior  
Paramedic  
salary

£70K

Average Consultant  
Paramedic salary

(Prospects.ac.uk, 2024)



The NHS alone employs 1.4million people, across 350 different jobs.  
(Prospects.ac.uk, 2024)



Level	Course	Duration
3	Health T Level - Adult Nursing	2 years
3	Health T Level - Mental Health	2 years
3	Health T Level - Midwifery	2 years
3	Level 3 Health and Social Care	2 years
2	Level 2 Health and Social Care	1 year
1	Routes to Employment	1 year
2	Adult Care Worker Level 2 Apprenticeship	27 months
2	Health and Social Care Level 2 Apprenticeship	21 months

Entry requirements:

T Level	Level 3	Level 2	Level 1
5 GCSE passes at a minimum of Grade 4, <b>which must include</b> English Language or Literature and Maths at Grade 4.	5 GCSE passes at a minimum of Grade 4, <b>which must include</b> a Grade 3 and 4 in English Language or Literature and Maths, in either combination.	4 GCSE passes at a minimum of Grade 3, or a Level 1 BTEC <b>which must include</b> a Grade 3 in English Language or Literature and Maths.	2 GCSE passes at a minimum of Grade 3, <b>which must include</b> a Grade 2 and 3 in English Language or Literature and Maths, in either combination.

What can  
you study  
with us?

To find out more about this course scan this code:



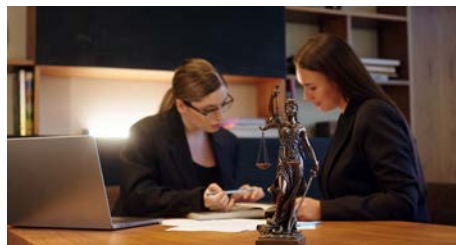


# Law, Justice & Protective Services

Are you passionate about serving your community as a member of the uniformed services? Do you dream of a career in Law & Justice?

Our Law, Justice & Protective Services courses at Accrington and Rossendale College are your gateway to unlock these aspirations! Tailored for careers in the uniformed services, our specialist Law, Justice & Protective Services programmes prepare you for roles as a Police Officer, Armed Forces Personnel or even as a Solicitor or Lawyer. By helping you develop comprehensive skills and knowledge valued by employers in these sectors, we provide the ideal foundation to kick-start your career. Your in-class studies will be enhanced through work experience and strong employer links, giving you invaluable industry relevant experience to help you

forge a high value career within this sector. At Lancashire's only Ofsted Outstanding Further Education College, you'll learn from experienced teachers, access state-of-the-art facilities, and benefit from industry-leading partnerships. Apply now to take your first steps towards a lucrative career in the exciting field of Law, Justice & Protective Services.



Where to next?

## University

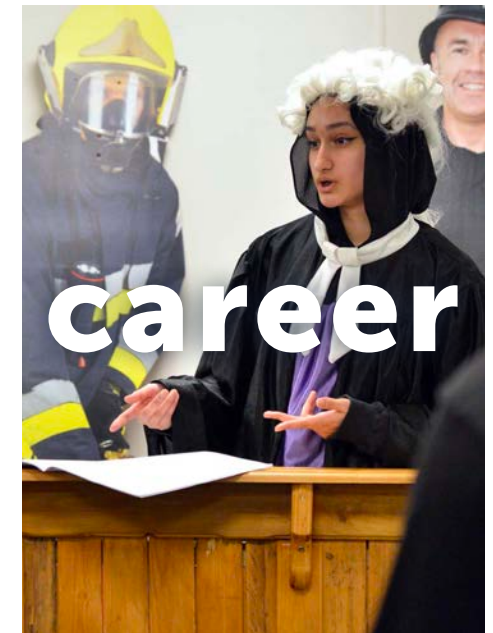
Studying Law, Justice & Protective Services (LJPS) opens a variety of doors for your future. With an LJPS qualification you could go on to study a wide range of undergraduate programmes at university, including **Law, Professional Policing, Criminology and many more courses at a multitude of universities across the country.**

## Apprenticeship

An Apprenticeship is a great option after College if you would like to go straight into the world of work. There are a range of Apprenticeship Standards available to undertake across a vast number of employers within the sector, including The Police. A number of Police services across the country offer Degree Apprenticeships which enable you to study for a degree whilst training on the job.

# Start your career

There are a variety of different career paths you can go into when you study Law, Justice & Protective Services. You can venture into many different sectors, including **Law, Policing and Crime & Justice.**







Police Officer

Lawyer

Judge

# You could become

Barrister

Prison Officer

Crime Scene Investigator



## and earn...

**£28K**

Average Police Officer salary

**£50K**

Average Police Sergeant salary

**£60K**

Average Police Inspector salary

(Prospects.ac.uk, 2024)



There are **over 225,000 jobs** within the Law, Justice and Protective Services Industry, in the North West, which is **almost 10% higher** than the rest of the country. (Lightcast, 2024)



Level	Course	Duration
3	Level 3 Law, Justice & Protective Services	2 years
2	Level 2 Law, Justice & Protective Services	1 year
1	Routes to Employment	1 year

### Entry requirements:

Level 3	Level 2	Level 1
5 GCSE passes at a minimum of Grade 4, <b>which must include</b> a Grade 3 and 4 in English Language or Literature and Maths, in either combination.	4 GCSE passes at a minimum of Grade 3, or a Level 1 BTEC <b>which must include</b> a Grade 3 in English Language or Literature and Maths.	2 GCSE passes at a minimum of Grade 3, <b>which must include</b> a Grade 2 and 3 in English Language or Literature and Maths, in either combination.

## What can you study with us?

To find out more about this course scan this code:



# Motor Vehicle

Are you absolutely fascinated by how engines work and the excitement of cars?

Are you eager to turn your love for motor vehicles into an exciting and fulfilling career?

If you answered yes, then our Motor Vehicle courses could be perfect for you!

The Motor Vehicle programmes at Accrington and Rossendale College offer high-quality training from industry experts and exciting opportunities for students.

Our experienced and knowledgeable tutors provide in-depth expertise of the automotive industry, transferable skills, and the ability to work on electric cars, preparing students for future Auto Mechanic roles.

With links to the Rolls Royce Group, Toyota and Nissan you will experience outstanding levels of employer interaction on these programmes, meaning you are ready to step into this industry with confidence and all the knowledge and skills you need to succeed in a high value career.



Get ready to fuel your ambitions and delve into an industry where you can turn your passion into a rewarding career with a Motor Vehicle course at Accrington and Rossendale College

There are a variety of different career paths you can go into when you study a Motor Vehicle course.

You can venture into many different sectors, including **Electric Vehicles, Race Cars and General Automotive Mechanics.**

## Start your



## career

Of the many careers available, you could become a: **Automotive Mechanic, an Aircraft Mechanic or a Race Car Mechanic**





Motorsport Engineer

Auto Body Technician

Motor Vehicle Breakdown Engineer

Motor Mechanic

Automotive Engineer

# You could become

Auto Electrician

Electric Vehicle Technician

Garage Manager



## and earn...

**£26K**

Average Automotive Engineer salary

**£38K**

Average Experienced Automotive Engineer salary

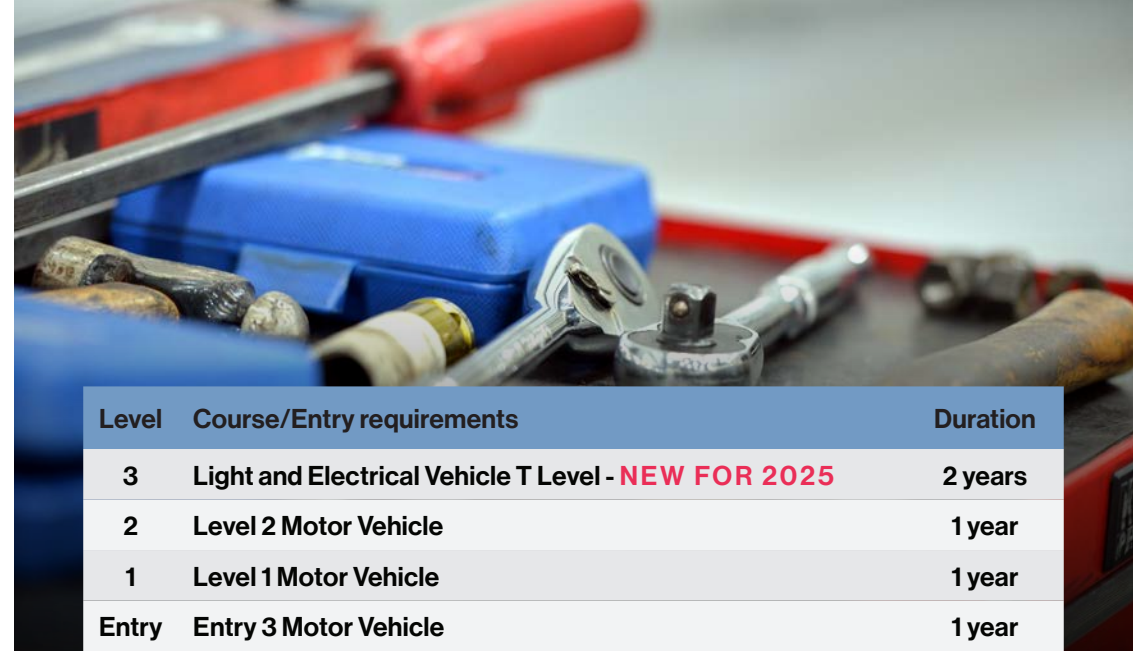
**£55K**

Average Senior Chartered Automotive Engineer salary

(Prospects.ac.uk, 2024)



Did you know that **nationally there are 686,076 jobs** available within the Motor Vehicle industry. (Lightcast, 2024)



Level	Course/Entry requirements	Duration
3	Light and Electrical Vehicle T Level - <b>NEW FOR 2025</b>	2 years
2	Level 2 Motor Vehicle	1 year
1	Level 1 Motor Vehicle	1 year
Entry	Entry 3 Motor Vehicle	1 year
2	Autocare Technician Level 2 Apprenticeship	30 months

### Entry requirements:

T Level	Level 3	Level 2	Level 1	Entry Level
5 GCSE passes at a minimum of Grade 4, <b>which must include</b> English Language or Literature and Maths at Grade 4.	5 GCSE passes at a minimum of Grade 4, <b>which must include</b> a Grade 3 and 4 in English Language or Literature and Maths, in either combination.	4 GCSE passes at a minimum of Grade 3, or a Level 1 BTEC <b>which must include</b> a Grade 3 in English Language or Literature and Maths.	2 GCSE passes at a minimum of Grade 3, <b>which must include</b> a Grade 2 and 3 in English Language or Literature and Maths, in either combination.	2 GCSE passes at a minimum of Grade 3, which must include a Grade 2 in English Language or Literature and Maths.

## What can you study with us?

To find out more about this course scan this code:





# Sport

Prefer the gym to the classroom, the running track to an office, or the 3G pitch to a library? Engage both your physical and academic muscles with our sports courses at ARC.

With a diverse range of courses, we cover various areas within the sports field. Whether you aspire to be a Personal Trainer, Physiotherapist, Nutritionist or Sports Psychologist, we have something for everyone pursuing a career in the ever-growing UK sports industry. Our unique partnership with Burnley Football Club in the Community, enables learners at ARC to gain expert knowledge and experience across the sports industry, in particular within top flight football. Additionally, ARC provides fantastic opportunities for scholarships and working holidays in the US.

**Apply now at Lancashire's only Ofsted Outstanding Further Education College and receive the best head start for a successful career in the sports industry.**



There is no limit to where Sport can take you. By studying at Accrington and Rossendale College, you could go on to:

## University

Studying Sport opens a variety of doors for your future. With a Sport qualification you could go on to study a wide range of undergraduate programmes at university, including **Sport & Exercise Science, Sports Performance, Sports Coaching, Physiotherapy, Sport Journalism, Nutrition and many more** courses at a multitude of universities across the country.

# Start your career

There are a variety of different career paths you can go into when you study Sport. You can venture into many different sectors, including **Sports Coaching, Nutrition, Physiotherapy, Psychology, Performance Analysis, Leisure Management, Fitness Instructing and Journalism.**

## Apprenticeship

An Apprenticeship is a great option after College if you would like to go straight into the world of work. There are a range of Apprenticeship Standards available to undertake across a vast number of employers within the sector.





Leisure Manager

Sports Coach

Personal Trainer

Nutritionist

Performance Analyst

# You could become

Sports Therapist

Physiotherapist



## and earn...

£33K

Average Physiotherapist salary

£35K

Average Clinical Specialist Physiotherapist salary

# £45K

Average Head of Service Physiotherapist salary

(Prospects.ac.uk, 2024)



There are **around 1,000 high performance sport jobs** spanning a range of organisations operating right across the UK (UK Sport)



**BURNLEY**  
FC IN THE COMMUNITY

Level	Course	Duration
3	Level 3 Sports Coaching & Development	2 years
3	Level 3 Sports & Exercise Science	2 years
3	Level 3 Sport & Leisure Professional	2 years
2	Level 2 Sport & Leisure Professional	1 year
1	Routes to Employment	1 year

### Entry requirements:

Level 3	Level 2	Level 1
5 GCSE passes at a minimum of Grade 4, <b>which must include</b> a Grade 3 and 4 in English Language or Literature and Maths, in either combination.	4 GCSE passes at a minimum of Grade 3, or a Level 1 BTEC <b>which must include</b> a Grade 3 in English Language or Literature and Maths.	2 GCSE passes at a minimum of Grade 3, <b>which must include</b> a Grade 2 and 3 in English Language or Literature and Maths, in either combination.

## What can you study with us?

To find out more about this course scan this code:







# Entry Level

Our wide range of Entry Level courses means you can progress to a thriving career in most sectors including becoming a Hairdresser, Teaching Assistant or an Engineer.

Our Entry Level courses offer work experience and work placements, suited to you, which provide work ready skills designed to support you to secure a high value career.

As an Entry Level student, you will develop basic skills and knowledge of your chosen subject, alongside English and maths. You will also develop your personal skills such as communication, team work and problem solving. Your programme will include work experience within your chosen sector.

We have close relationships with local and national businesses, that provide outstanding work experiences which give you a head start on a career within your chosen sector. You will also study English and Maths within your programme to ensure you are supported to progress in your industry of choice.



Level	Course	Duration
Entry Level 3	Entry Routes to Employment	1 Year
Entry Level 3	Entry 3	1 Year
Entry Level 2	Entry 2	1 Year
Entry Level	ESOL Entry Level Pathways	1 Year
Entry Level 3	Entry 3 ESOL - Technical Route	1 Year
Entry Level 3	Steps to Success - Preparation for Adulthood	1 Year
Entry Level 2	Steps to Success - Preparation for Adulthood	1 Year
Entry Level 3	Steps to Success - Preparation for Independence and Work	1 Year
Entry Level 1	Steps to Success - Work Matters	1 Year
N/A	Steps to Success - Supported Internship	1 Year

## Entry requirements:

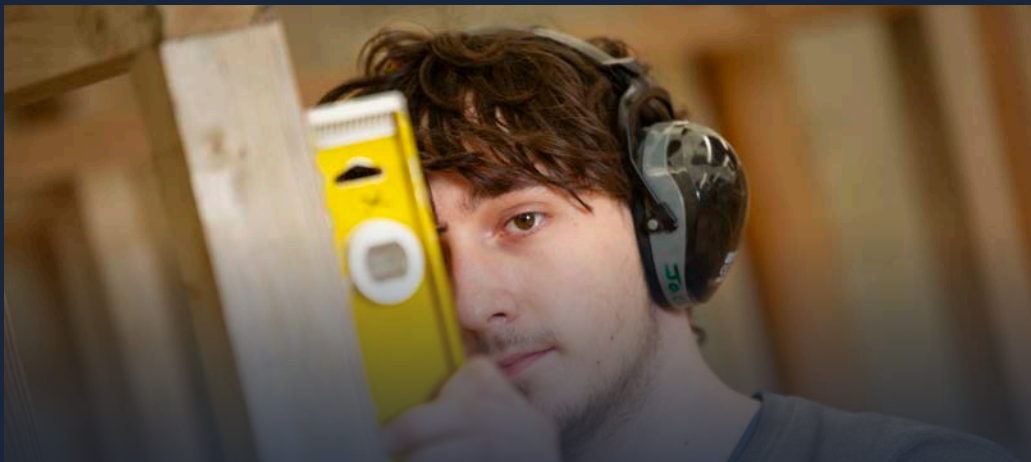
Entry Level 3	Entry Level 2	ESOL
2 GCSE passes at a minimum of Grade 3, <b>which must include</b> a Grade 2 in English Language or Literature and Maths.	2 GCSE passes at a minimum of Grade 2, <b>which must include</b> a Grade 1 and 2 in English Language or Literature and Maths, in either combination.	There are no formal entry criteria for this course but you will need to display a clear aspiration to progress into the world of work. Prior to starting this course you will need to complete an initial assessment.

Steps to Success	Steps to Success - Supported Internship
There are no formal entry criteria for this course, but you will need to display a clear aspiration to progress into the world of work. Prior to starting this course you will need to complete an initial assessment to determine suitability for the course.	There are no formal entry criteria for this course, but you will need to display a clear aspiration to progress into the world of work and must have a current Education, Health and Care Plan. Prior to starting this course you will need to complete an initial assessment to determine suitability for the course.



To find out more about this course scan this code:





# Apprenticeships

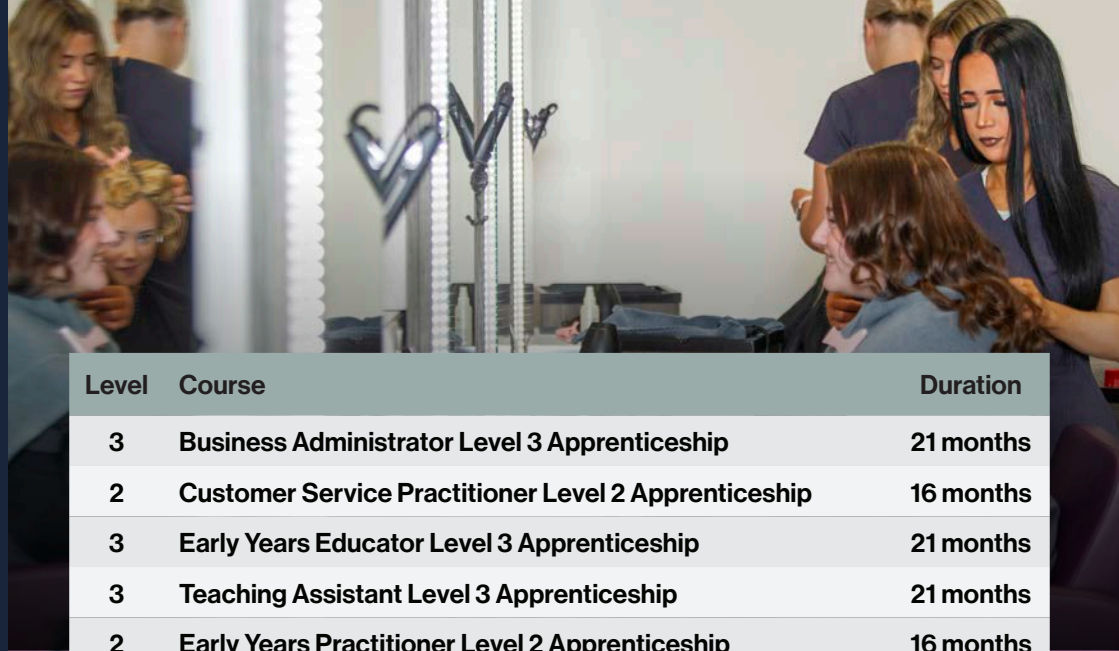
An Apprenticeship is a full-time job, where you will work for a business while gaining a nationally recognised qualification. It is on-the-job training, and you even get paid!

With an Apprenticeship, you will develop the skills and experience that employers want, building up an impressive CV. Apprenticeships take between one to four years to complete, depending on the type and level. What's great is you can learn at a pace suited to you and you will be supported at each stage by an industry specialist Trainer Assessor.

Accrington and Rossendale College have been providing high quality Apprenticeships for many years. We have an excellent reputation with businesses across East Lancashire and

beyond, who look to us to find their next leading employee. This could be you if you decide that an Apprenticeship is the right next step for you! We have a strong track record of Apprentices securing full-time employment after their Apprenticeship.

We have a specialist Apprenticeship Recruitment Team to help you find employment and support you through your application journey. We work with our wide range of top-quality employers, providing a talent matching service to ensure we support you in finding the right role.



Level	Course	Duration
3	Business Administrator Level 3 Apprenticeship	21 months
2	Customer Service Practitioner Level 2 Apprenticeship	16 months
3	Early Years Educator Level 3 Apprenticeship	21 months
3	Teaching Assistant Level 3 Apprenticeship	21 months
2	Early Years Practitioner Level 2 Apprenticeship	16 months
3	Craft Carpentry and Joinery Level 3 Apprenticeship	18 months
2	Carpentry and Joinery Level 2 Apprenticeship	27 months
2	Groundworker Level 2 Apprenticeship	21 months
2	Bricklayer Level 2 Apprenticeship	27 months
2	Painting and Decorating Level 2 Apprenticeship	27 months
2	Auto care Technician Level 2 Apprenticeship	30 months
2	Hair Professional Level 2 Apprenticeship	27 months
2	Adult Care Worker Level 2 Apprenticeship	27 months
2	Health and Social Care Level 2 Apprenticeship	21 months

What can  
**you study**  
 with us?

To find out more about this course scan this code:





# A Levels at NCC

## Achieve your ambitions with A Levels at Nelson and Colne College

Accrington and Rossendale College is part of Nelson and Colne College Group, including Nelson and Colne College (NCC) and Lancashire Adult Learning (LAL). At NCC, our bespoke A Levels offer a traditional academic path for those aspiring to progress to university, making it an ideal choice for curious minds, multi-subject enthusiasts, and students who excel in an exam setting.

When you embark on your A Level journey, you hand-pick three subjects that you genuinely enjoy and explore them over two years. This allows you to gain expertise across diverse subject areas, providing a well-rounded education. For those who seek an additional challenge, there's even an option to study four subjects, where appropriate.

## A Levels we offer:

A Level Foundation Programme	English Literature	Mathematics
3D Design	Fashion & Textiles	Media Studies
Ancient History	Film Studies	Philosophy, Ethics & Religion
Biology	Fine Art	Photography
Business	Further Maths	Physical Education
Chemistry	Geography	Physics
Computer Science	Geology	Psychology
Core Maths	Government & Politics	Sociology
Criminology	Graphic Design	Spanish
Economics	History	Statistics
English Language	Law	

Your A Level study programme is made up of the following:

**3**

A Level subjects which you study for two years

**7**

A weekly tutorial



A weekly Academic, Personal and Professional Skills Session



Extra-curricular

Super-curricular – Scholars' and Pre-Professional Programmes

# Nelson & Colne College



At our sister campus, Nelson and Colne College, we offer a variety of exciting courses.

## Engineering

**Are you a problem solver who enjoys understanding how things work? Take your place on an Engineering course at Nelson and Colne College!**

Experience the fascinating world of Engineering at Lancashire's only Ofsted Outstanding Further Education College. Learn from experienced and knowledgeable tutors, benefit from industry-leading partnerships in our Industry Innovation hub, and utilise our newly redeveloped £2.5 million state-of-the-art modern facilities. Whether in College or out on placement, your learning experience will be exceptional.

### We offer:

Level 1,  
Level 2 and  
Level 3  
Engineering,  
T Level  
Engineering and  
Engineering  
Apprenticeships.

## Science and Healthcare Science

**Are you positively charged with a love for Science? Take your place on a Science course at Nelson and Colne College!**

As a Science student, you can not only expect the highest quality of training from industry experts, but also a wide range of exciting opportunities to enhance your learning experience. You will be helped in tailoring your study programme, through work experience placements, trips, guest speakers, and more.

### We offer:

A Levels,  
Level 2 and  
Level 3 Applied  
Science and  
Healthcare  
Science T Level.

## Our Schools Team



I'm Mel and I lead our Academic and Technical Education Mentors, a dedicated team who will work with you, in school and on campus, to:

- Inspire you in your career choices
- To help you better understand the wide range of employers in our region, and the job opportunities within them
- Build your employability skills and knowledge
- Align your career choices to the right courses after school
- Provide you with detailed College course information
- Provide application help and support
- Offer personalised campus tours

We work closely with employers, curriculum teams and former students to make our courses come to life to show you how they can best meet your career aspirations. We are here to make your next steps after school as easy as possible, and provide you with all you need to make confident career choices.

### Get in touch

If you have any questions or need further advice regarding your next steps at ARC, please contact us on:

✉ [schools@nelsongroup.ac.uk](mailto:schools@nelsongroup.ac.uk)

☎ 01282 440 288



# Ready to take your place?

## How to apply

Applications for courses starting in September 2025 open in September 2024.



We accept applications throughout the year, however we encourage you to apply early and by **31st December** for T Levels and by **1st February** for all other courses, so you can be part of our applicant journey.

By applying early you can benefit from **VIP access to our Open Events, priority interview slots and exclusive applicant incentives.**

**Go ahead!** Scan the QR code below to submit your application for a guaranteed place on one of our courses.

Scan the QR code to create an account with us and apply via our online portal. By applying online, you will be able to track your application, update your personal details anytime, view your application status, update and change your courses and view your interview appointment details.

## Need help or support? Our friendly Admissions Team are here for you.

### What do we do?



Offer course information and advice



Process all college applications



Arrange your college interview



Offer support throughout your application journey



Provide all the information you need about enrolment



### What can we help with?

- Applications
- Answering questions about a College course
- Accepting your course offer
- Changing your application or subject choice
- Finding out about entry requirements
- Changing your interview date/time
- Providing a tour of the College



**Get in touch!** Email us at [admissions@nelsongroup.ac.uk](mailto:admissions@nelsongroup.ac.uk) or call us on **01282 440272**

# Parent, Carer & Guardian Information

We know you will have questions about your young person's next steps, so here's everything you need to know to support you and your young person's transition to College.

## How can I help my young person choose the correct course



Talking to them about their favourite subjects and what they enjoy about them is a good place to start. You could discuss careers and what job they would love to do in the future. Once these have been identified, we can support in advising the pathways most suitable to match their interests. Our Open Events are a great way to learn more about the options available to your young person after school.

## When does my young person need to apply to College



Applications can be made throughout the year; however, we do recommend applying early to make the most of our exciting applicant journey and to ensure we can keep in touch with them throughout their last year at school. The earlier they apply the more access they will have to our exclusive events and will be able to build stronger links with their future tutors and employer partners.

## Why does my young person need to attend an interview



Interviews are an important part of the application process as this is their chance to speak to the tutors of their selected course to ensure it's the right choice for them. Interviews usually last around 15-minutes and are very informal.

## My young person would like to go to University after College. Does College support with University applications



Yes! When they are ready to start looking at Universities, our expert Careers Team are here to help with personalised careers advice, university applications, university finance advice, interview techniques and much more.

## What if my young person changes their mind about their course choice



That's absolutely fine! Application choices can be changed at any time by contacting our Admissions Team on [admissions@nelsongroup.ac.uk](mailto:admissions@nelsongroup.ac.uk) or **01282 440272**; they will be invited to another interview for their new course choice.

## Is there financial support for my young person



We have an extensive financial support package for our full-time 16–18-year-old students which are tailored to individual needs. We also have a College Bursary Fund which some students may be eligible for. More information can be found on page 29.

## What support is available to my young person



There are a wide range of specialist services here at College to support them every step of the way. You can find out more on page 30 to 31.

## Parent, carer and guardian checklist:



- Discuss different options available after school with your young person
- Attend a College Open Event
- Find out more about our range of Vocational, Apprenticeship and T Level Courses
- Consider how your young person will travel to College
- Check your young person has submitted their application
- Add our New Student and Enrolment dates to your diary. You can find these on the back of this College guide.
- Support your young person to attend their interview

## Looking for further information?

Scan the QR codes below to find out more about...



Term dates



Parents' zone



Financial support

Join us at one of our  
**Open Events**

**Open Event**

Wednesday 25th September 2024  
5.30-7.30pm

**Open Event**

Monday 4th November 2024  
5.30-7.30pm

**Careers Event**

Thursday 13th February 2025  
5.30-7.30pm

**Year 8, 9 & 10 Event**

Wednesday 23rd April 2025  
5.30-7.30pm

**New Student Day**

Thursday 26th June 2025  
All Day

**GCSE Results Day & College Enrolment**

Thursday 21st August 2025  
All Day



[accross.ac.uk](http://accross.ac.uk)

01254 389933 [admissions@nelsongroup.ac.uk](mailto:admissions@nelsongroup.ac.uk)